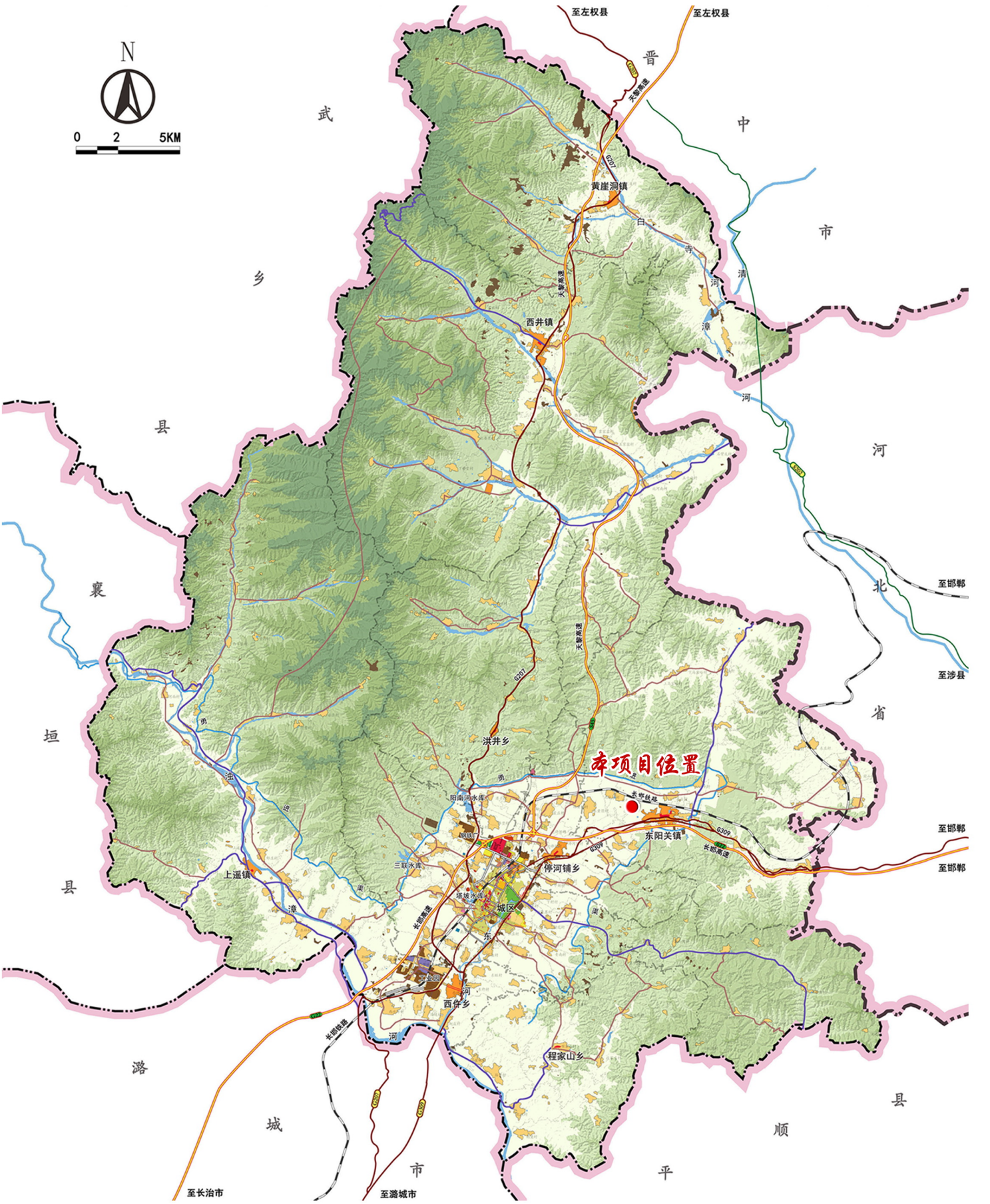


1 黎城县与长治市的位置关系图  
2 规划地块与黎城县的位置关系图  
3 规划地块与周边用地的位置关系图



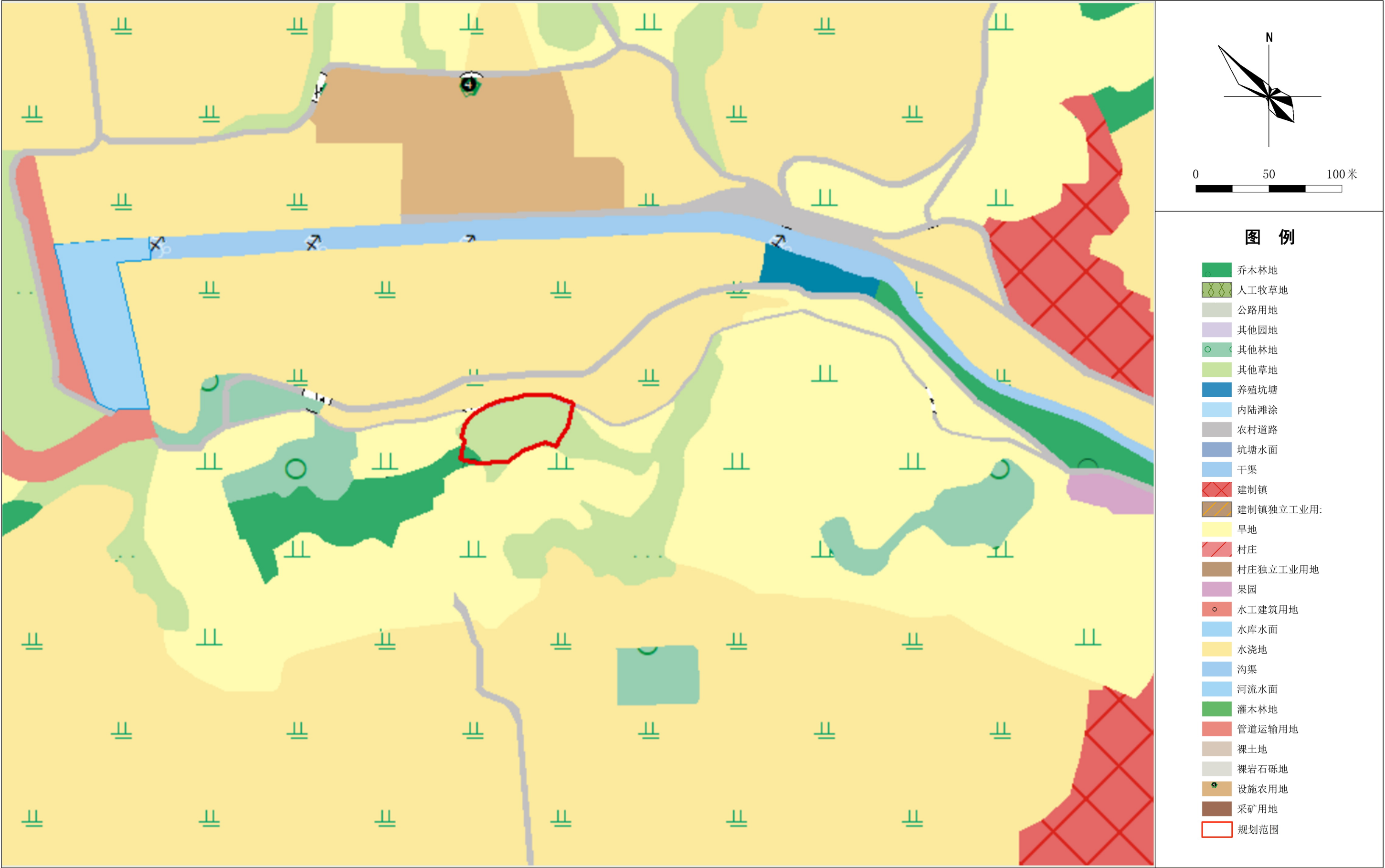


周边关系图

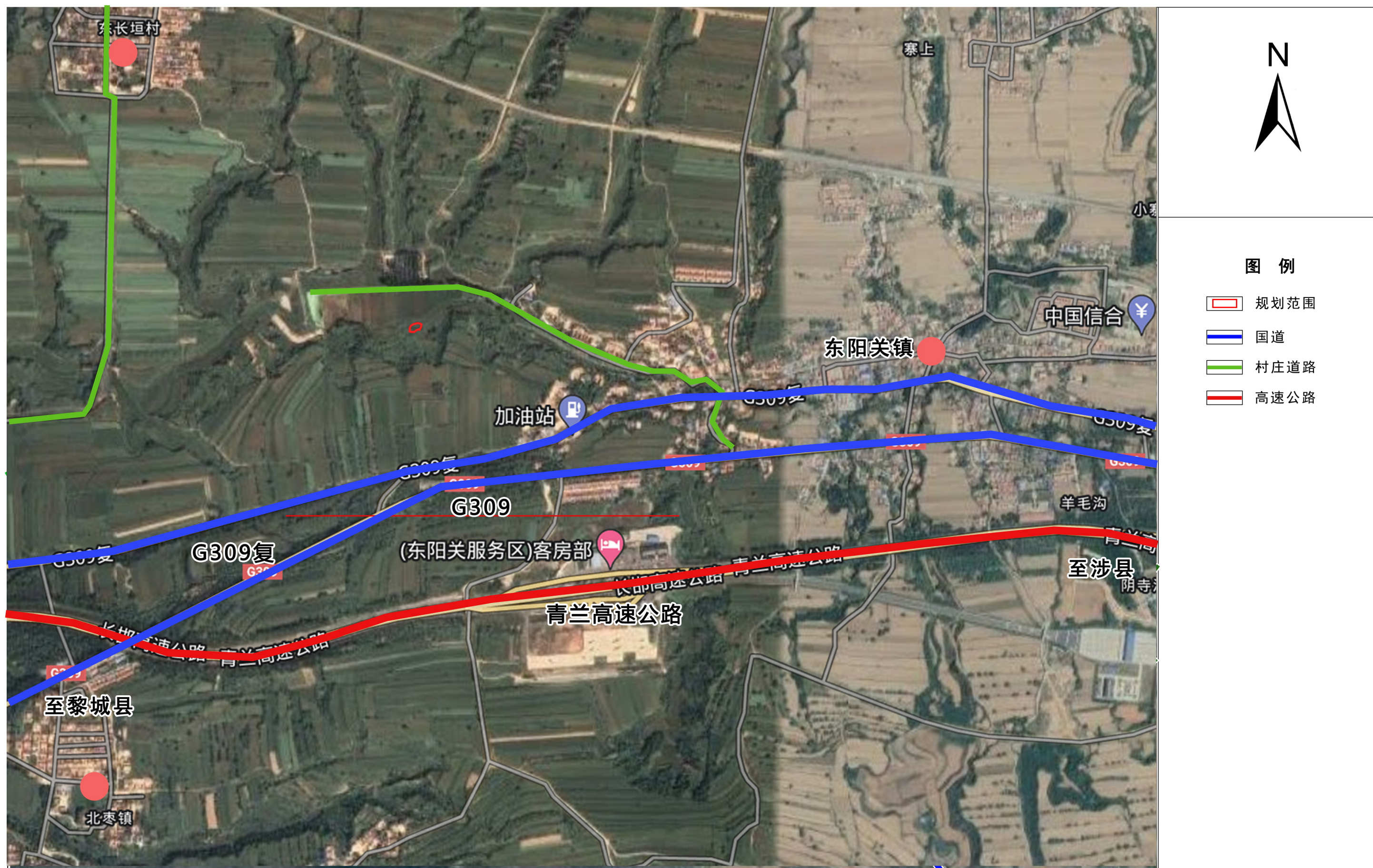




土地利用现状图

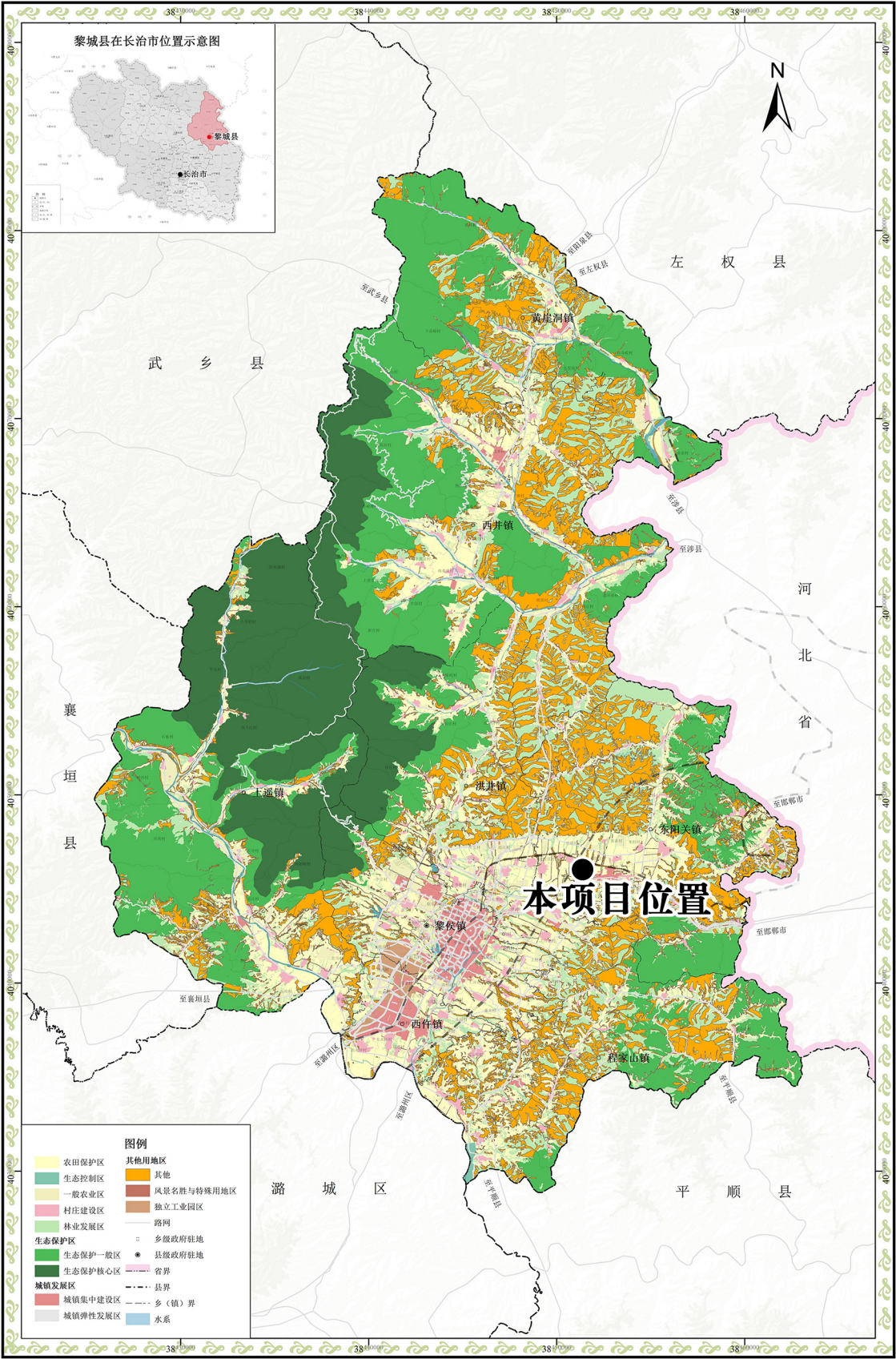








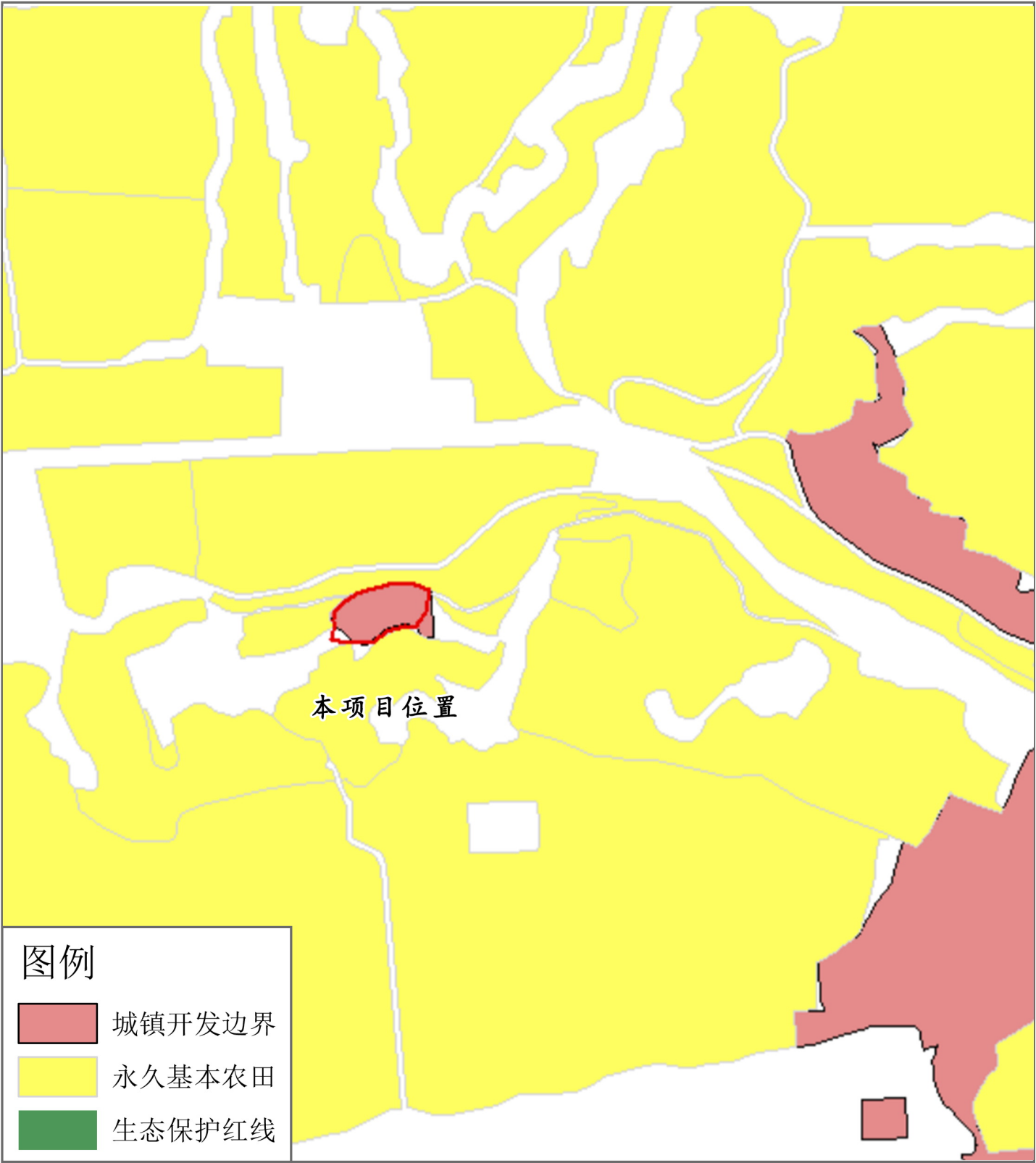
县域国土空间规划分区图



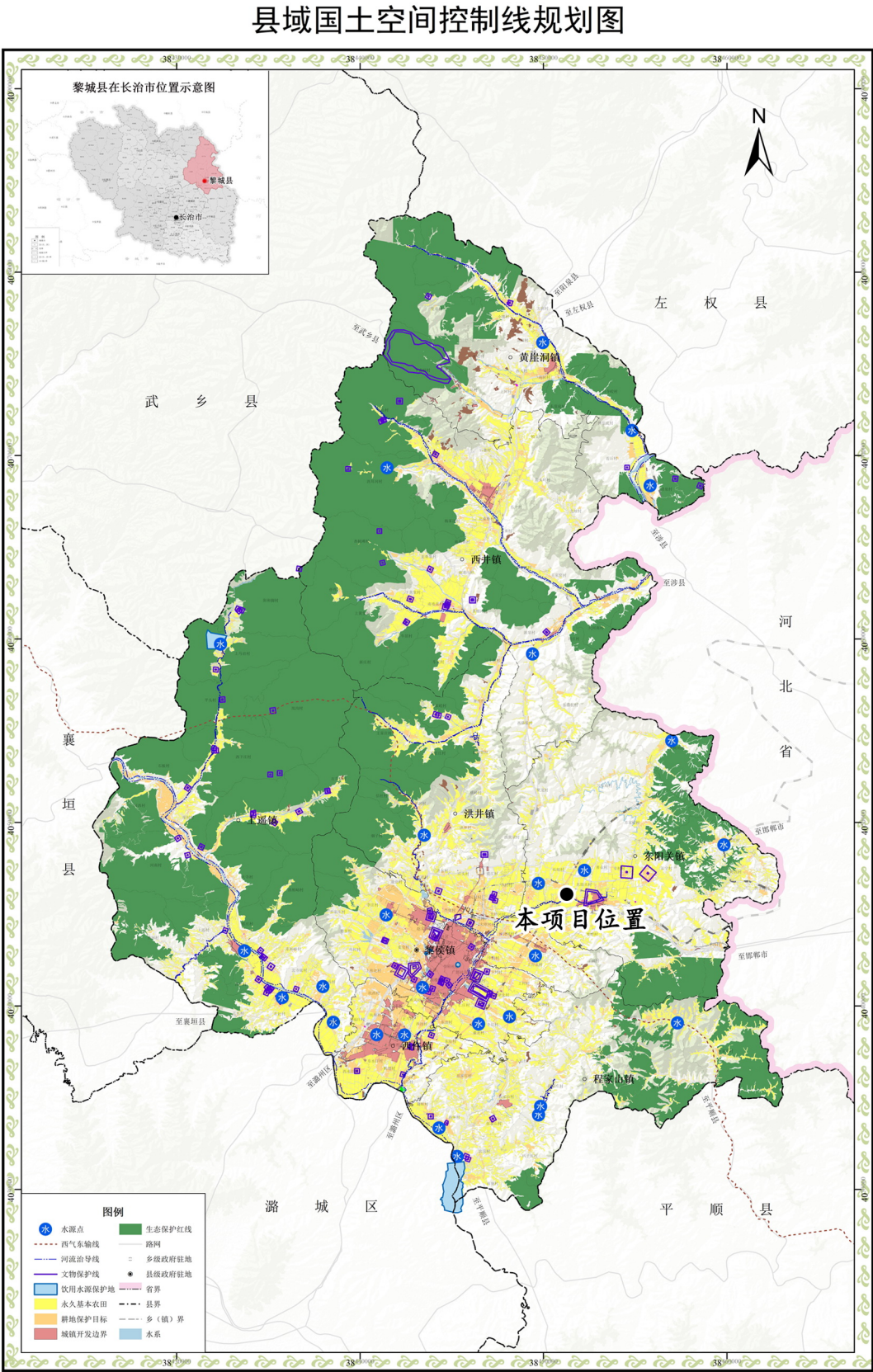
县域综合交通规划图





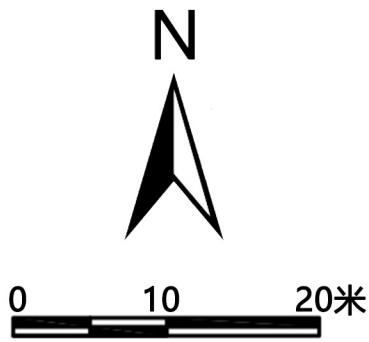
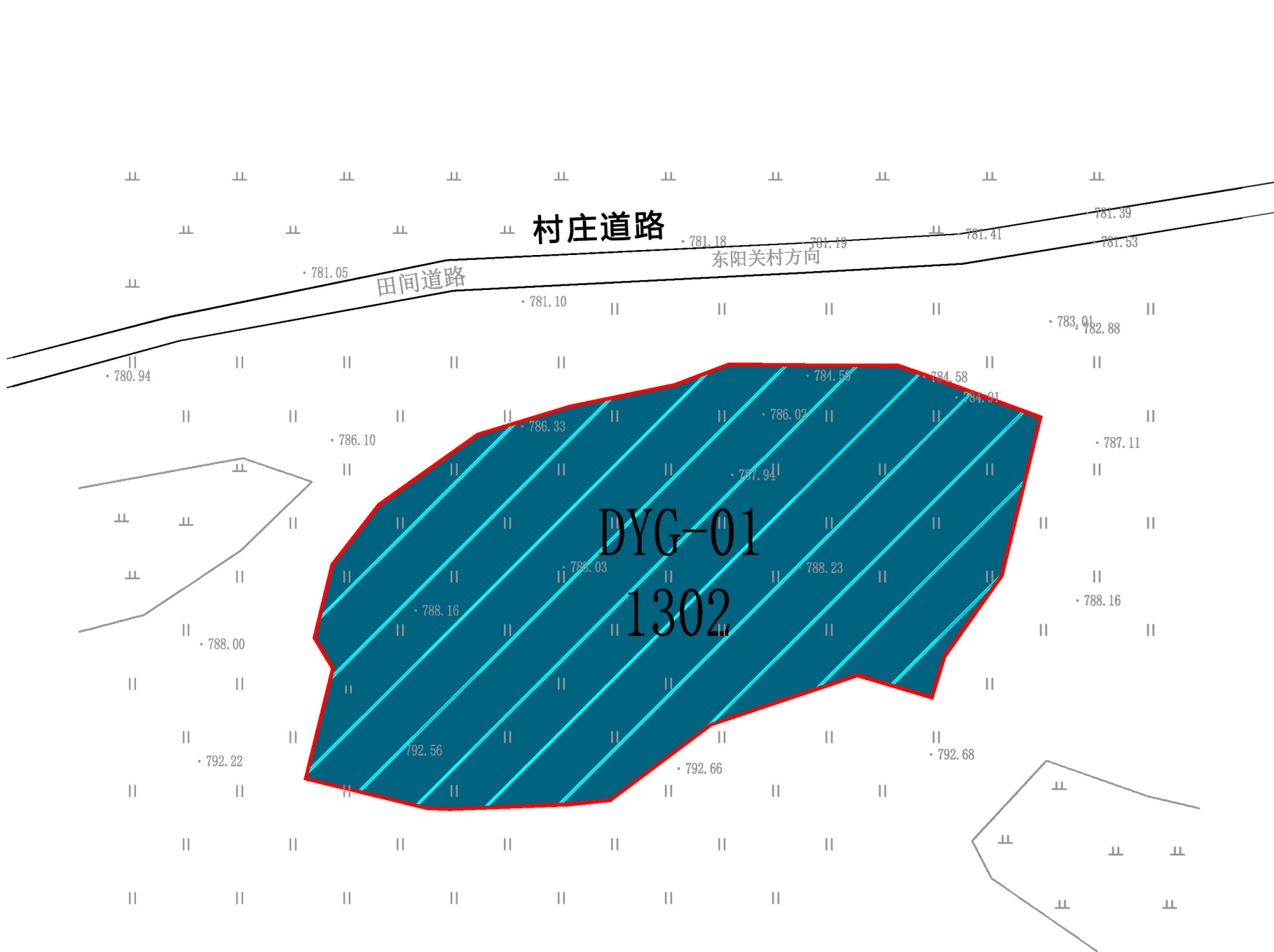


规划地块与黎城县城镇开发边界田的位置关系图



规划地块与黎城县国土空间控制线的位置关系图

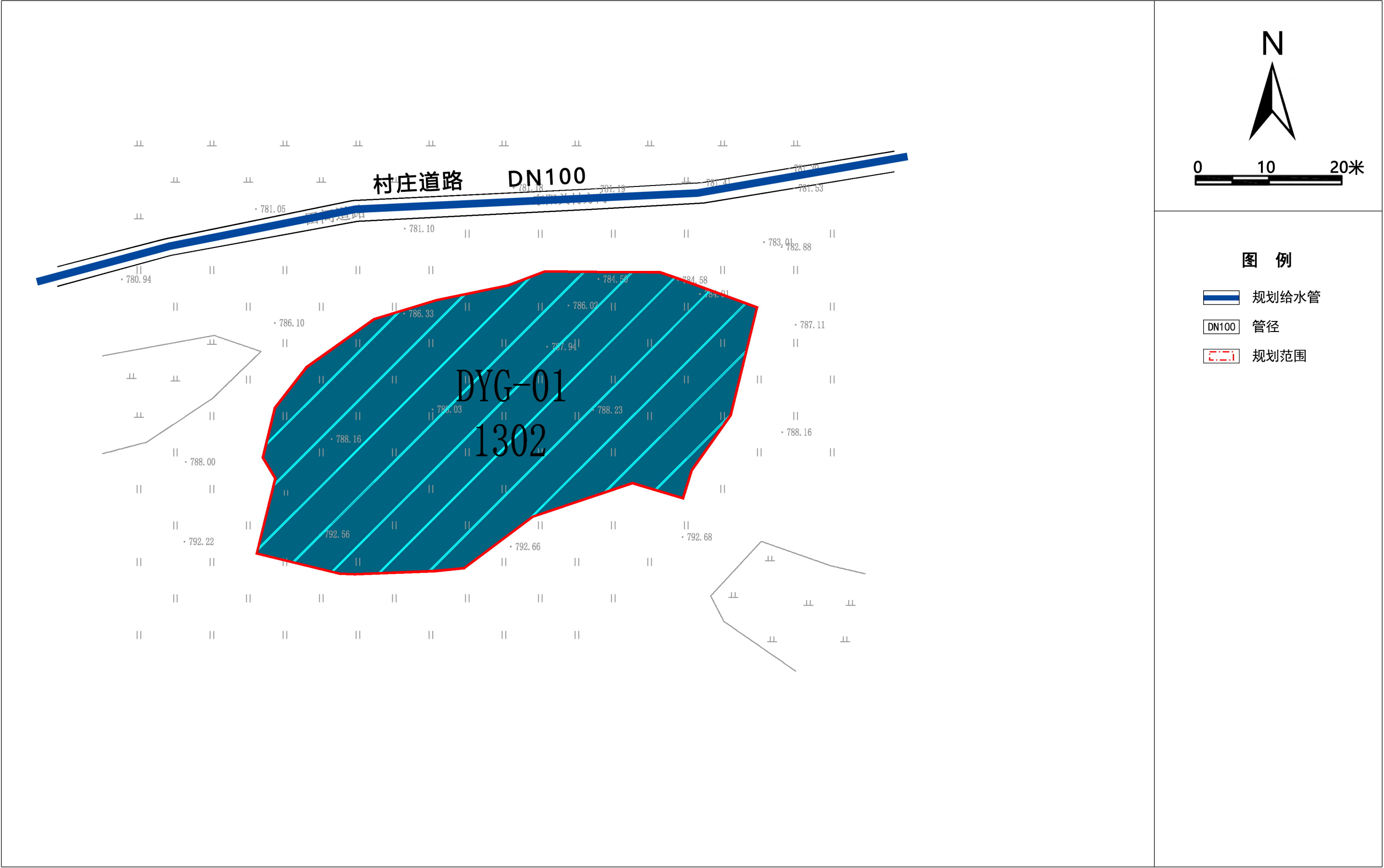




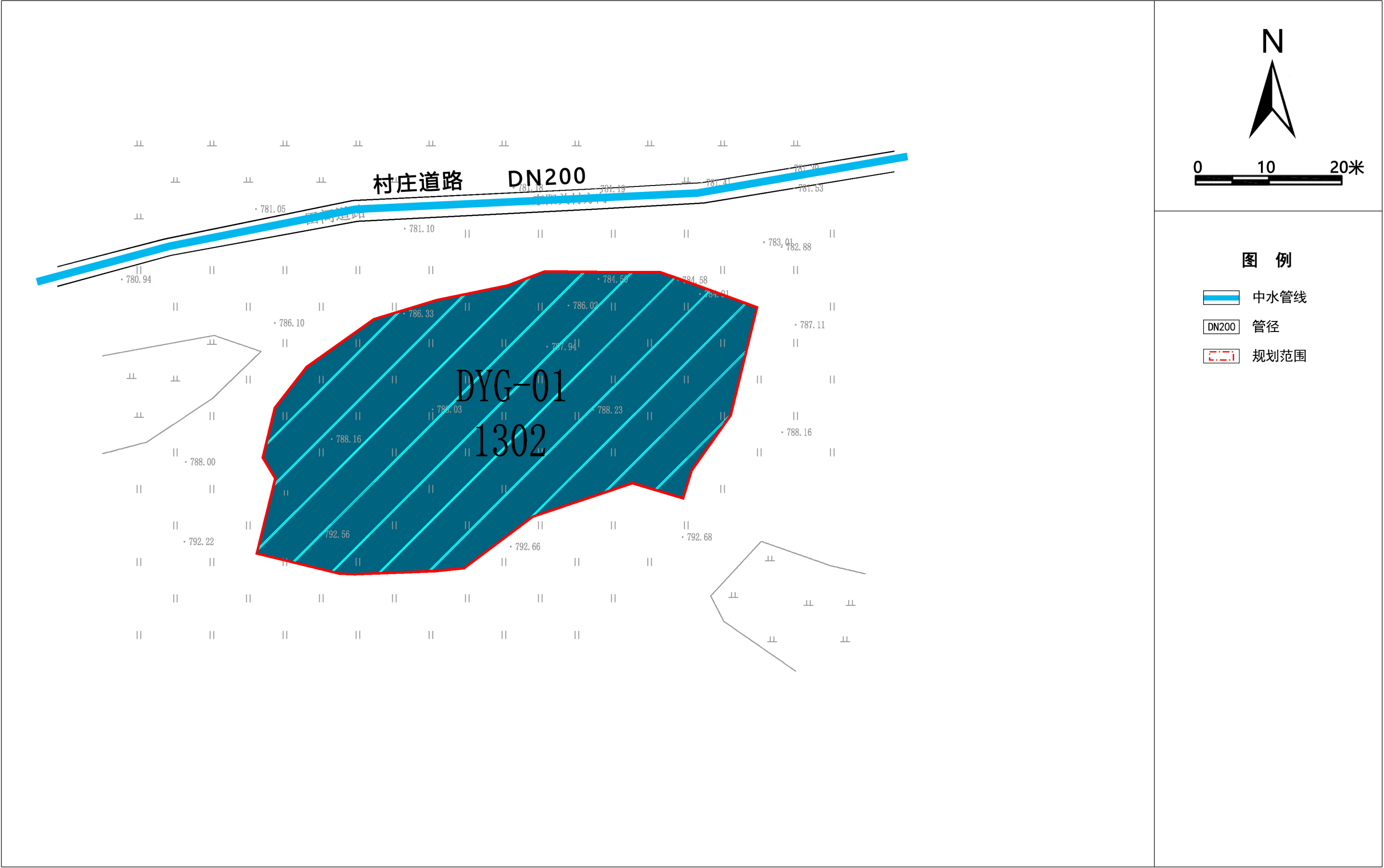
## 图 例

- 1302 排水用地
- 规划范围

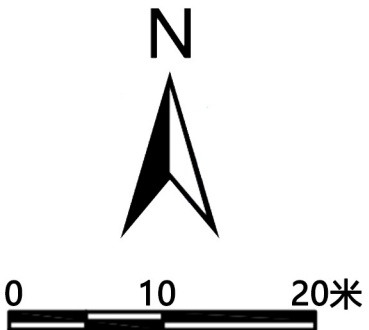
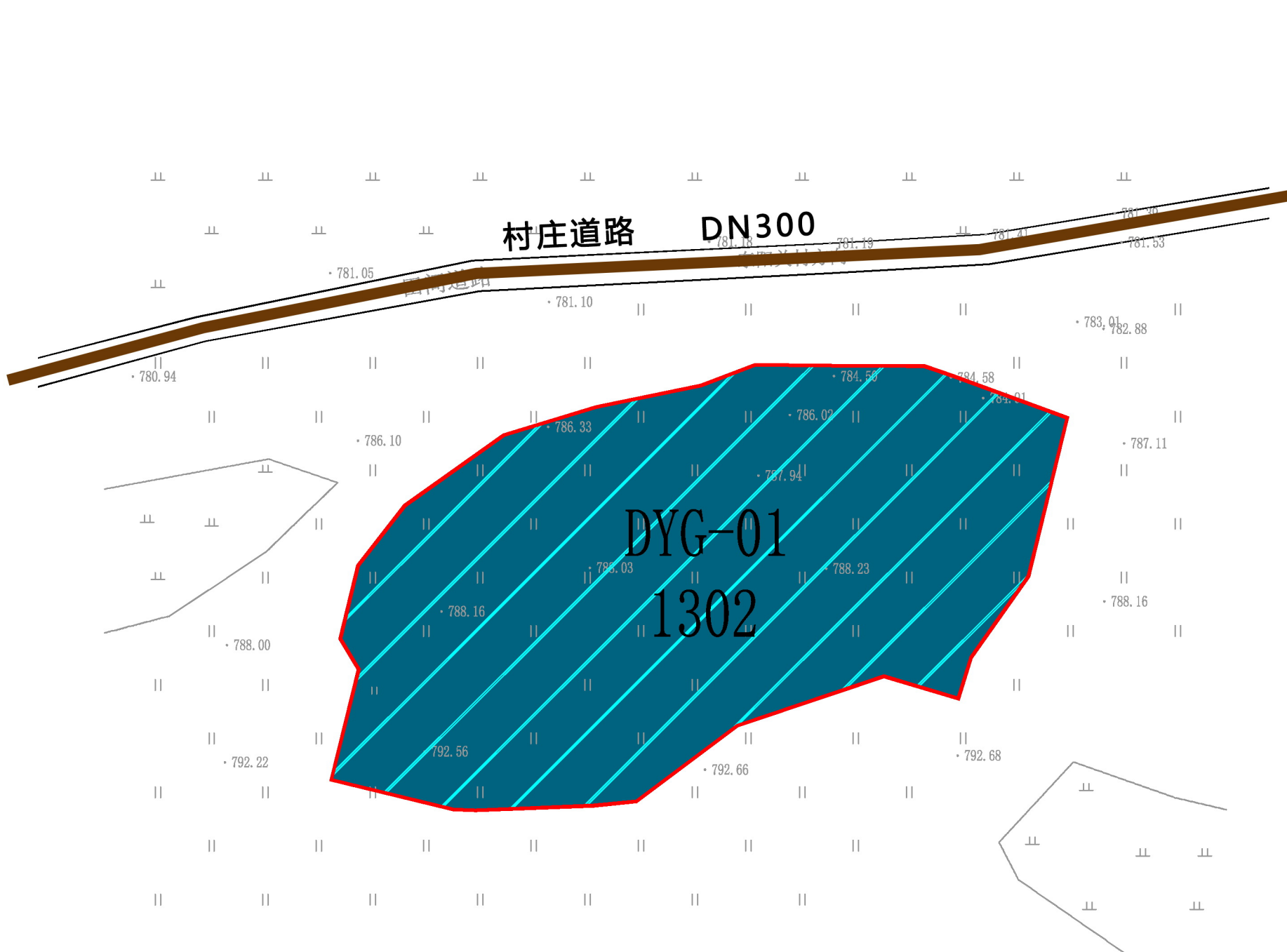











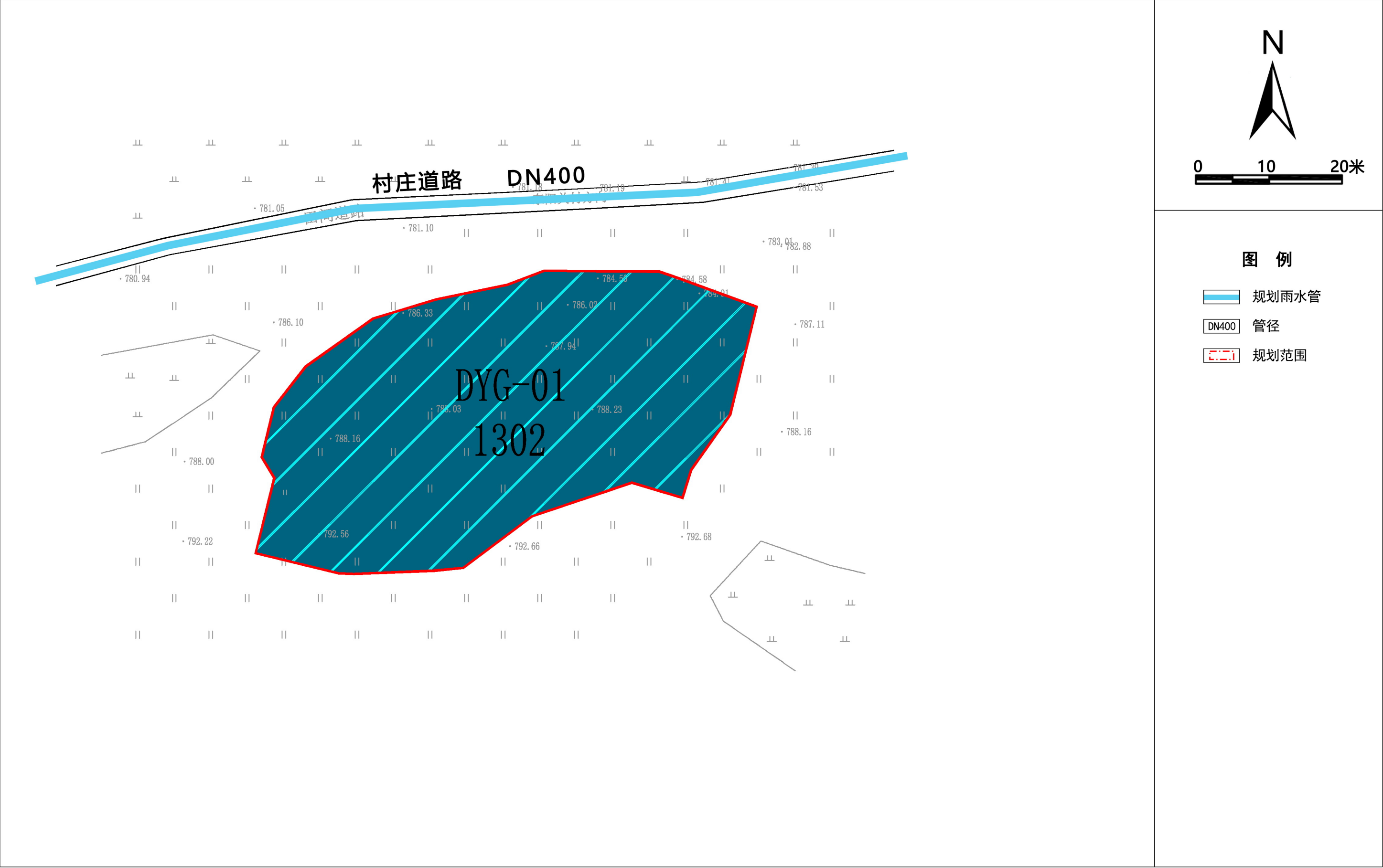




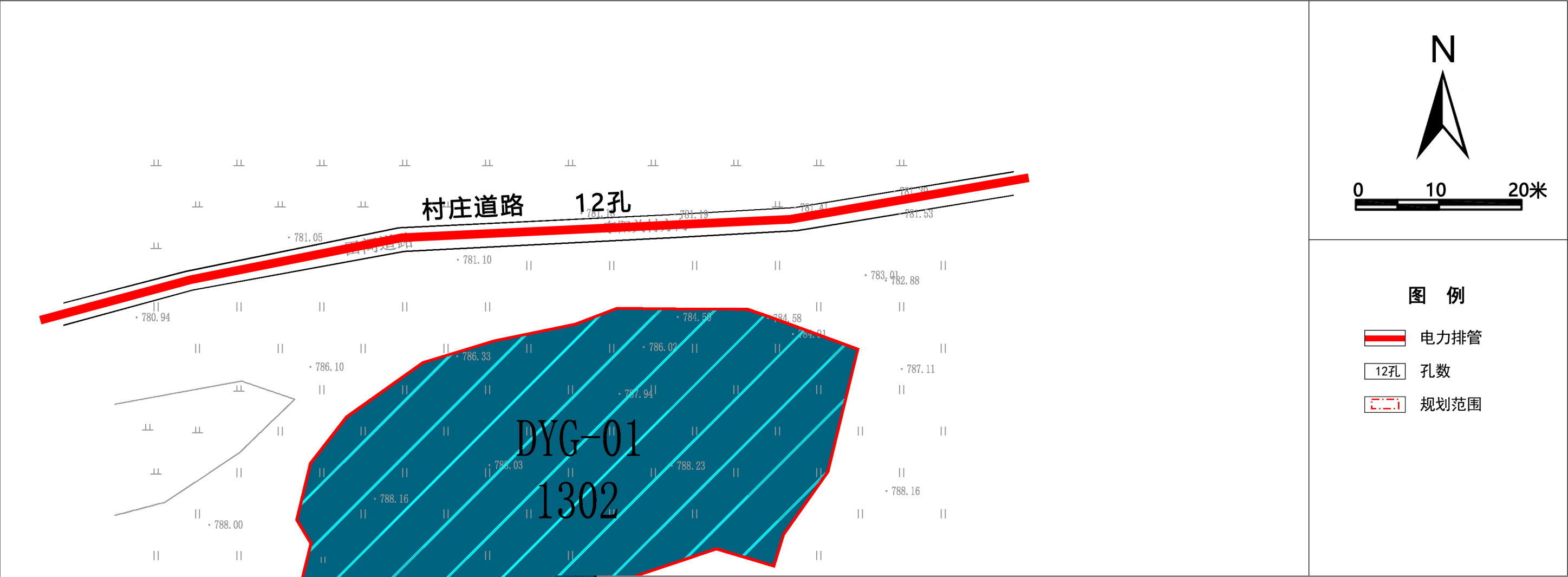
### 图 例

-  规划污水管  
 管径  
 规划范围











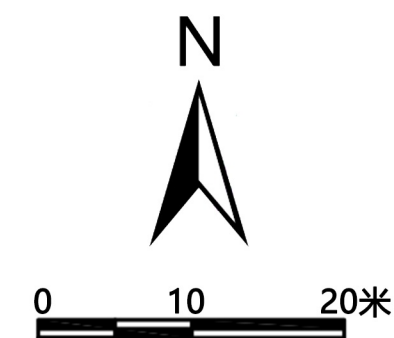
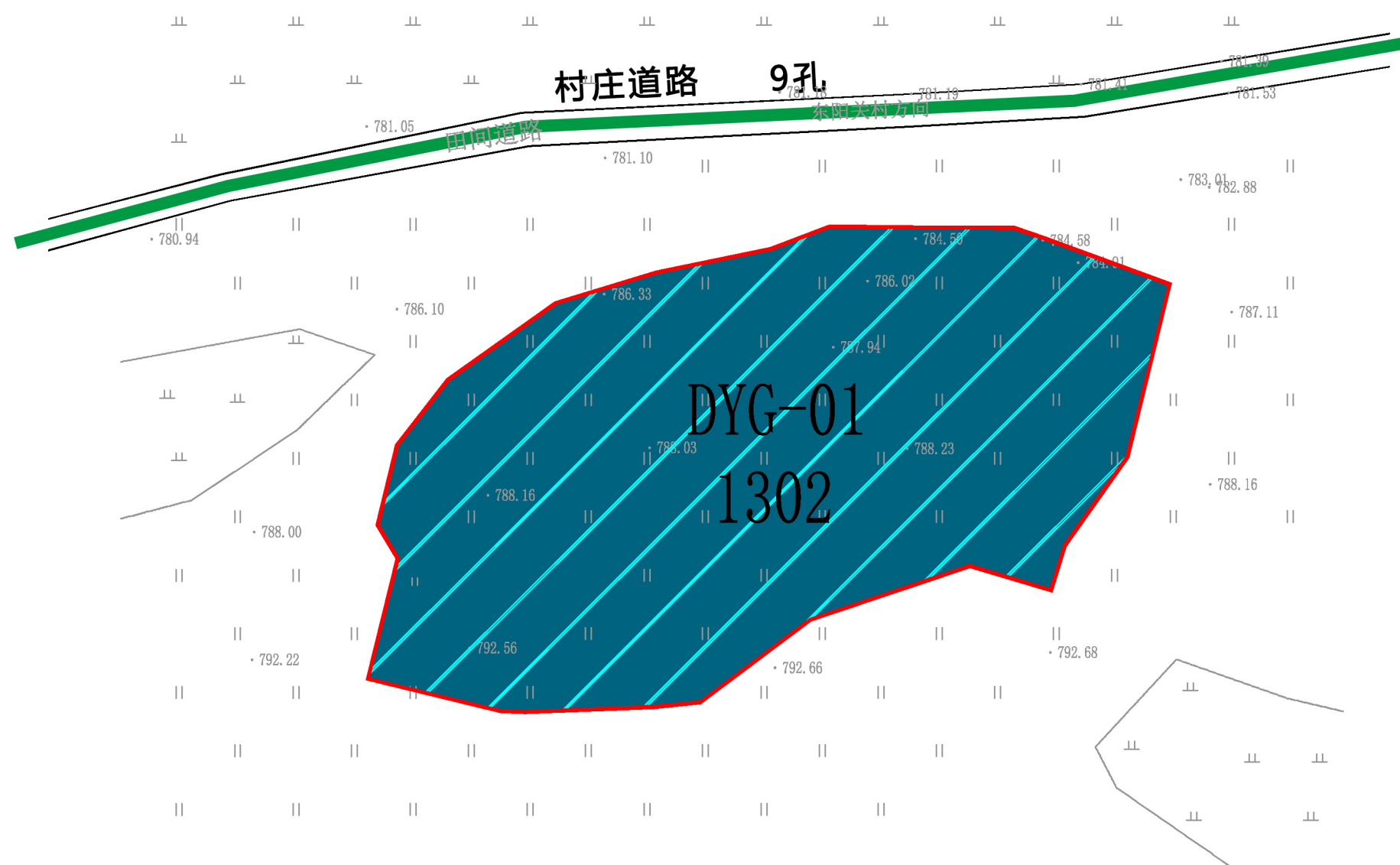





图 例

-  通信管线
  -  孔数
  -  规划范围



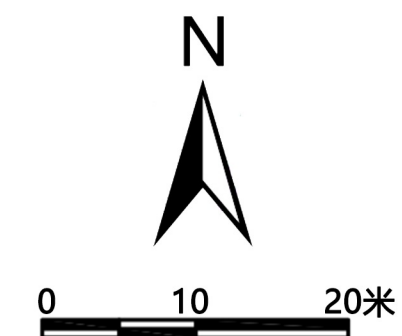
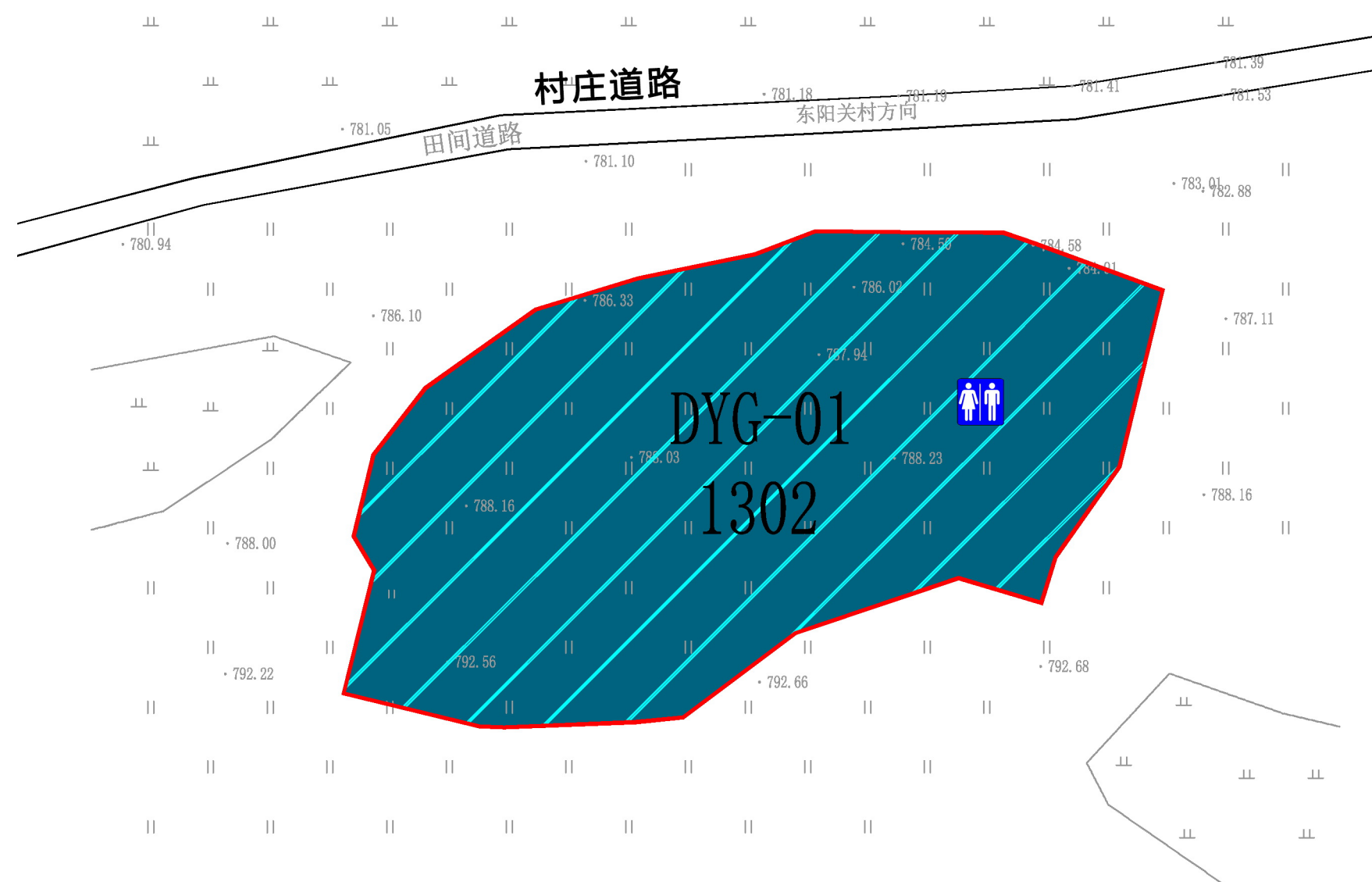
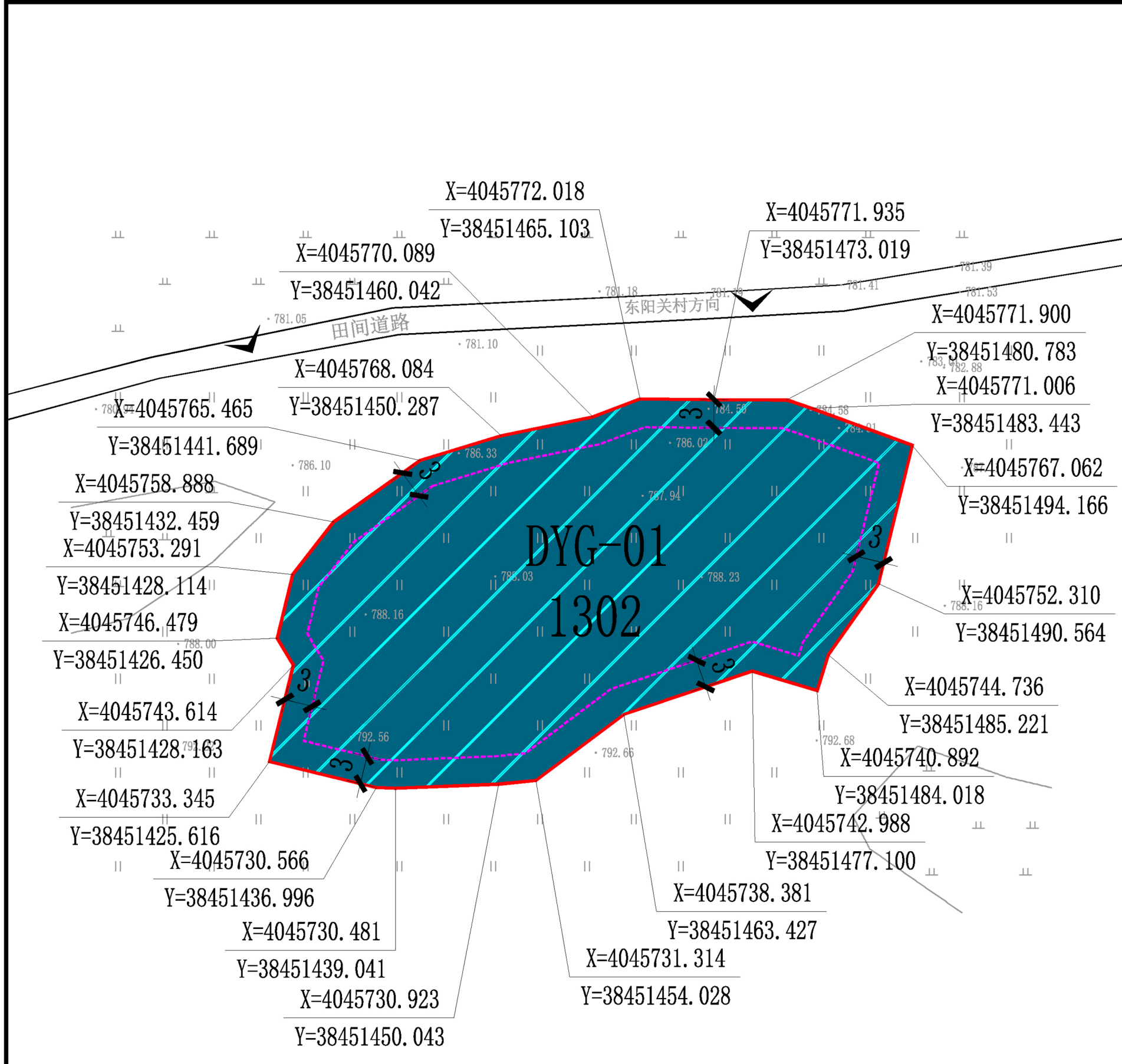


图 例

-  公共厕所  
 规划范围





位置图			
控制指标	地块编号		DYG-01
	用地代码		1302
	容积率		≤1.0
	建筑密度(%)		≤40
	绿地率(%)		≥25
	建筑限高(m)		10
	总面积(m²)		2000
	用地面积(m²)		2000
	主出入口		N
	东面退后(m)		3
	南面退后(m)		3
	西面退后(m)		3
北面退后(m)		3	
图例	<div><div>DYG-01</div>地块编码</div>		
	<div><div>1302</div>用地性质</div>		
	<div><div>X=26325.86 Y=48758.64</div>坐标及标高</div>		
	<div><div>3</div>规划范围</div>		
	<div><div></div>用地界限</div>		
	<div><div></div>道路红线</div>		
	<div><div></div>建筑退让距离</div>		
	<div><div></div>机动车出入口</div>		
	<div><div></div>净用地面积</div>		

黎城县东阳关镇污水处理站指标研究报告

规划图则  
[东阳关镇污水处理站]